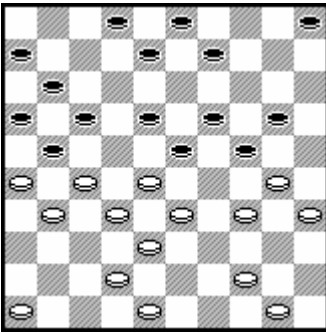


**(1) Dijkstra, T. - Wiersma, H.**

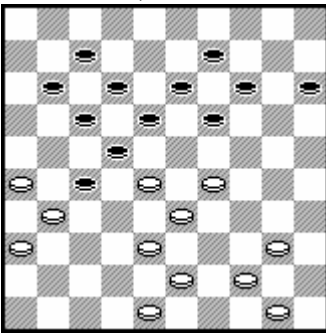


NLD-chT, 08-03-1997

24. ... 24-29 25.33x22 8-13 26.28x8 17x37 27.26x17 3x43 28.48x39  
37x48 29.30-25 48x26 30.25x3 11-17 31.3x21 26x49 32.50-44 49x40  
33.35x44 2-8 34.39-33 8-13 35.33-29 16-21 36.46-41 21-27 37.41-37  
6-11 38.29-23 5-10 39.44-39 10-14 40.39-34 11-17 0-2

**(1) Tsjizjow, A. - Heusdens, R.**

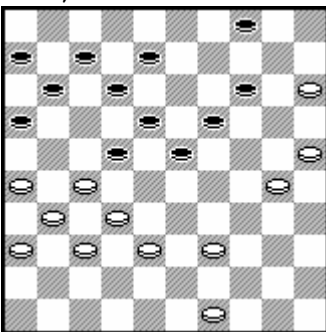
NLD-URS, 14-09-1982



33.26-21 17x37 34.28x8 13x2 35.48-42 37x28 36.29-24 19x30 37.40-34  
30x39 38.44x4 27-32 39.38x27 7-12 40.4-22 11-16 41.22-28 14-20  
42.28-23 2-0

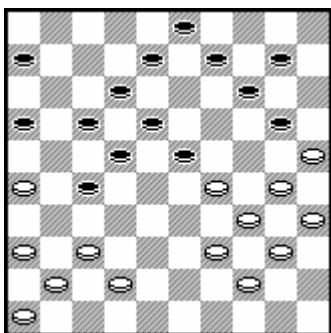
**(1) Clerc, R. - Gantwarg, A.**

Wch, 23-09-1985



36. ... 4-10 37.15x4 14-20 38.25x14 19x10 39.4x15 23-28 40.32x23  
18x29 41.15x17 12x25 42.37-32 25-30 43.31-27 7-12 44.32-28 11-17  
45.27-22 30-34 46.22x11 6x17 47.28-23 34-40 0-2 (2.00/1.42)

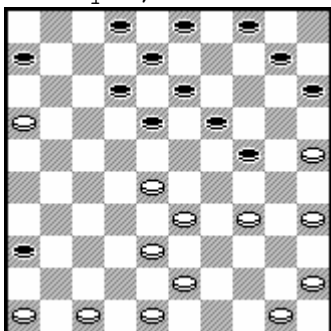
(1) Valneris, G. - Wiersma, H. match, 09-01-1996



30.26-21 17x26 31.29-24 20x29 32.37-31 26x48 33.30-24 29x20 34.39-33 48x30 35.35x2

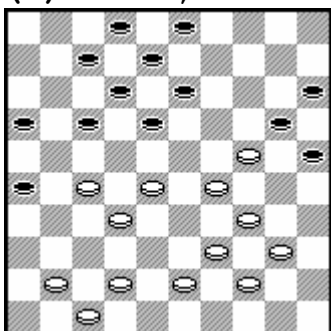
(1) Presman, A. - Schwarzman, A.

Wch q1a, 15-12-1997



24.25-20 24-30 25.34x25 15x24 26.47-41 36x47 27.38-32 47x29 28.28-22 18x49 29.50-44 49x40 30.45x5

(1) Akker, van den, J. - Thijssen, K.

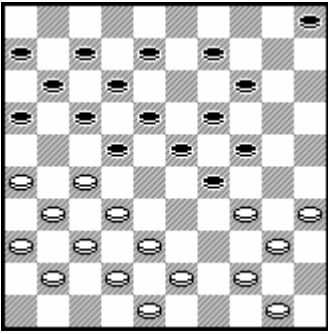


NLD-ch, 18-03-2003

28... 25-30 29.34x14 3-9 30.14x3 18-22 31.27x9 8-13 32.9x18 12x45  
33.3x21 16x40 0-2 (1.39/1.39)

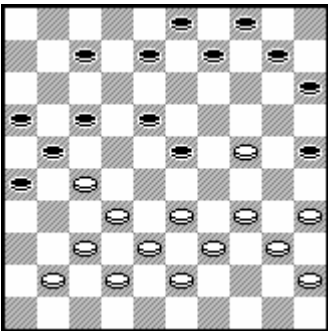
**(1) Samb,N. - Kouassi,D.**

Zeeland open fin 03/04, 07-07-2000



24.35-30 24x35 25.44-39 35x33 26.50-45 29x40 27.38x29 23x34 28.32-  
28 22x33 29.42-38 33x42 30.27-21 16x27 31.31x2 42x31 32.2x49 2-0  
(1.30/1.22)

Bubbi,R.-Raminodi,W. Ita ch 2003



1.34-30 25x34 2.39x30 10-14 3.33-28 14-20 4.28x19 20x29 5.30-24  
29x20 6.19-13 8x19 7.37-31 26x39 8.40-34 39x30 9.35x2